

Scottsdale: Arizona's Oasis of Art

By JOHN VILLANI



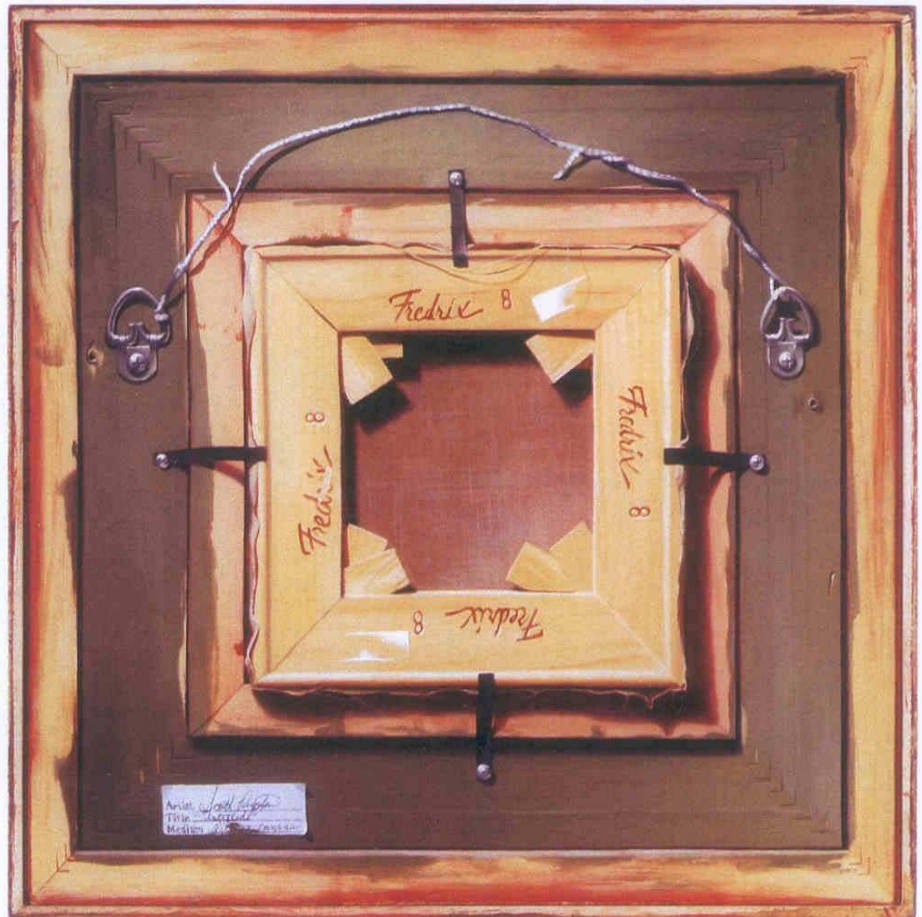
Most of America's liveliest art communities feature at least one pedestrian-friendly district of galleries run by knowledgeable proprietors with diverse tastes, an innovative museum or two, art walks and festivals, enthusiastic collectors, an energetic arts council, and a facility that shines light upon mid-career artists. In the desert community of Scottsdale, Arizona, these assets have been tossed and seasoned with high-quality craft and furnishings shops, then garnished with sophisticated restaurants. With the winter "high season" upon us, now is the time to survey this distinctive art scene, set among towering saguaro cacti and palm trees.

Scottsdale Road, the north/south artery bisecting downtown, splits Scottsdale into two gallery districts, Old Town and Main Street. The former is embellished with architecture evoking the Wild West, while Main Street showcases a range of architectural styles from desert modernism to pueblo adobe. Lloyd Kiva New (1916-2002), a fashion and textile designer of Cherokee heritage, developed the first cluster of galleries on the Main Street side of Scottsdale Road in the 1950s. Today Scottsdale is home to more than 100 galleries of all shapes and creative genres.

MAIN STREET

Among the standouts on Main Street is **Overland Gallery of Fine Art**, renowned for its 20th-century Russian paintings and for such exceptional landscapists as the Arizonan Ed Mell, Utah's Gary Ernest Smith, and the Texan Martin Grelle, whose evocations of the West are infused with the erudition of a historian. **This January, Scottsdale Fine Art Gallery will present the International Guild of Realism's latest juried show of paintings, even as it continues offering figurative sculptures by George Lundeen of Colorado, the segmented wood vessels of Arizona's Robert Brengause, and the Impressionist landscapes of California's Charles Muench.**

S.R. Brennen Gallery of Fine Art brings a decidedly international perspective to Main Street through such exhibitors as Di Li Feng of China, Jean Luc Messin of France, and local talent Elaine Coffee. At **Willow**



SCOTT ROYSTON (b. 1974)

YOU'VE BEEN FRAMED

2007, OIL ON CANVAS, 16 x 16 IN.

AT SCOTTSDALE FINE ART GALLERY, JANUARY 16-FEBRUARY 8

Gallery, the offerings include Linda Kyser Smith's sensual figurative paintings, Ken Spencer's landscapes, and Charles Ewing's portraiture. Located on the western perimeter of Main Street at Goldwater Boulevard, **Gallery Russia** specializes in art from modern-day Russia and the former Soviet Union. The Impressionist landscapes of Evgeni Chulkov are among its highlights, along with Tatiyana Lushnikova's still lifes and Boris Fedorov's pastoral scenes. Also on Main is the **Charles H. Pabst Signature Gallery**,